



Finally,  
the **Advance**  
You've Been  
Looking for.



At System Sensor, we realize that your fire system is the final touch before a building is approved for occupancy. With anticipation of an on-time grand opening, building owners are depending on you to install that system quickly and accurately.

With that in mind, System Sensor was determined to build you an advanced series of SpectrAlert notification appliances to speed up your installations. To achieve that goal, we conducted nationwide interviews with commercial fire-system dealers, installers, engineers and designers to secure their reactions to several prototypes. In order to form the best representative sample, participants underwent screening assessments and several question and answer sessions.

Now, on behalf of your voice, System Sensor is proud to announce the industry's newest series of audible/visible devices, SpectrAlert Advance.

**SPECTRAlert®**  
**ADVANCE**  
from System Sensor





## Indoor and Outdoor Strobes, Horns, Horn/Strobes and Chimes

System Sensor welcomes you to the Advance life. Now, simplify your mounting process with SpectrAlert Advance's plug-in designs. Just snap your device onto a universal mounting plate and attach it with a captive mounting screw for added security. All SpectrAlert Advance products are compatible with 4-inch square, 4-inch octagon and single- and double-gang backboxes. And, our four-wire horn/strobes can be powered separately and controlled independently.

In case you can't plug your products in because the painters haven't come through yet, don't waste your time unraveling the masking tape. With SpectrAlert Advance products, we include paint covers to protect your mounting plates. And, trust us, these plates are worth protecting. Why? We thought you'd never ask.

SpectrAlert Advance mounting plates come with shorting springs that allow you to check for continuity before installing your devices. What a time saver! Assembling your entire system, turn-

ing on the panel and then walking around to ensure your devices are working are a thing of the past. On compatible control panels, SpectrAlert Advance horns and strobes provide instant feedback upon individual installation by beeping or flashing three times if correctly installed.

And, installing your strobes is now easier than ever. SpectrAlert Advance strobes now feature eleven candela settings: 15, 15/75, 30, 75, 95, 110, 115, 135, 150, 177 and 185. What you won't have to choose is the 12- or 24-volt operation at 15 and 15/75 candela because SpectrAlert Advance products automatically adjust to either voltage.

As for your horns, choose your tone effortlessly with the new, easy-to-interpret rotary switch. Multiple volume levels can be selected at 88+ dBA, and synchronization is possible for all your chimes and horns. And, all outdoor products are now UL listed from minus 40 degrees to 151 degrees Fahrenheit.

Enjoy the new SpectrAlert Advance features you've been looking for and the effortless installations, time savings and financial rewards that accompany it.

## Advance Quality

System Sensor's SpectrAlert Advance series is more than advanced in product features, but also in quality. Along with its new industrial look, its industrial strength is guaranteed. SpectrAlert Advance products are UL and CSFM listed, FM and MEA approved, and have passed System Sensor's internal quality assurance program. All System Sensor products are functionally, environmentally, mechanically and electrically tested in extreme conditions before going to market.

## Advance Customer Support

System Sensor sells millions of fire safety products each year. With such product demand, we take pride in providing our customers with the utmost technical support team. System Sensor's technical support team receives more than 3,000 calls per month, and they only take 15 seconds on average to respond.





## The Advance Enhancements

- Plug-in design
- Snap on attachment with captive mounting screw for added security
- Field-selectable candelas: 15, 15/75, 30, 75, 95, 110, 115, 135, 150, 177 and 185
- Same mounting plate for wall and ceiling
- 12 or 24 VDC/FWR
- Rotary switch for horn tone selection
- Synchronized sound for chime and horn
- Three volume settings on horn products
- Two volume settings on chime products
- Wall and ceiling outdoor products
- Outdoor products listed from -40°F to 151°F



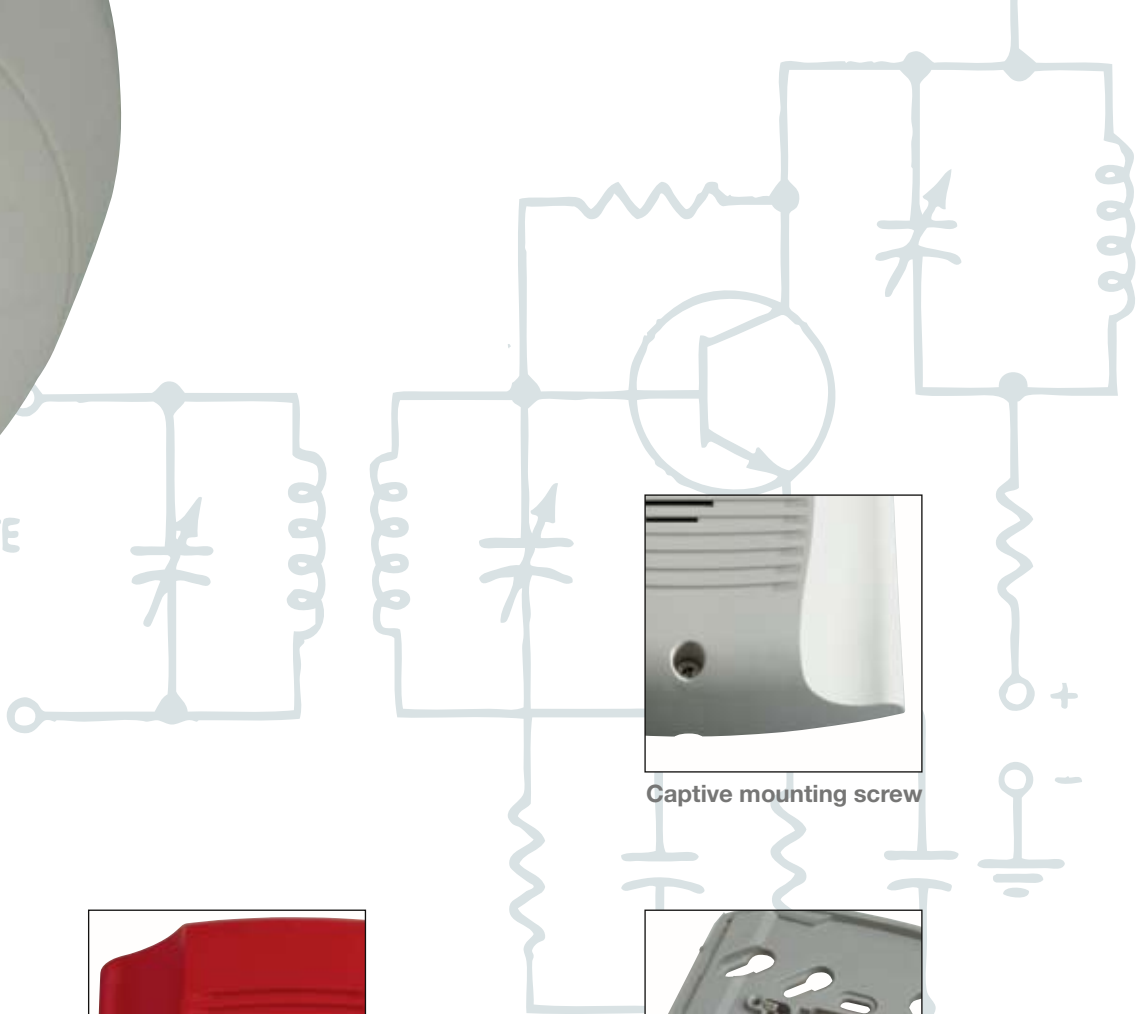
Plug-in design allows pre-wiring and continuity check prior to device installation



2- and 4-wire horn/strobes available to meet local code requirements



IMMEDIATE  
FREQUENCY  
AMPLIFIER



Rotary switch for horn  
tone selection



Field-selectable  
candelas up to 185 cd



Horn rated at 88+ dbA  
at 16 volts



Captive mounting screw



Same mounting plate  
for wall and ceiling



Wall and ceiling outdoor  
products



## Horns and Chimes

HR	Horn, Red
HW	Horn, White
CHR	Chime, Red
CHW	Chime, White
HRK	Outdoor Horn, Red



## Wall Strobes

SR	Strobe, Standard Candela, Red
SRH	Strobe, High Candela, Red
SW	Strobe, Standard Candela, White
SWH	Strobe, High Candela, White
SRK	Outdoor Strobe, Standard Candela, Red
SRHK	Outdoor Strobe, High Candela, Red



## Wall Horn/Strobes and Chime/Strobes

P2R	2-wire Horn/Strobe, Standard Candela, Red
P2RH	2-wire Horn/Strobe, High Candela, Red
P2W	2-wire Horn/Strobe, Standard Candela, White
P2WH	2-wire Horn/Strobe, High Candela, White
P4R	4-wire Horn/Strobe, Standard Candela, Red
P4RH	4-wire Horn/Strobe, High Candela, Red
P4W	4-wire Horn/Strobe, Standard Candela, White
P4WH	4-wire Horn/Strobe, High Candela, White
CHSR	2-wire Chime/Strobe, Standard Candela, Red
CHSW	2-wire Chime/Strobe, Standard Candela, White
P2RK	2-wire Outdoor Horn/Strobe, Standard Candela, Red
P2RHK	2-wire Outdoor Horn/Strobe, High Candela, Red
P4RK	4-wire Outdoor Horn/Strobe, Standard Candela, Red
P4RHK	4-wire Outdoor Horn/Strobe, High Candela, Red



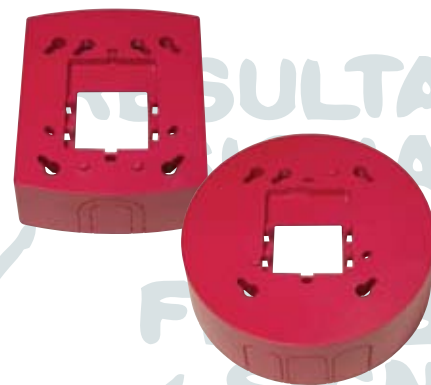
## Ceiling Strobes

SCR	Strobe, Standard Candela, Red
SCRH	Strobe, High Candela, Red
SCW	Strobe, Standard Candela, White
SCWH	Strobe, High Candela, White
SCRK	Outdoor Strobe, Standard Candela, Red
SCRHK	Outdoor Strobe, High Candela, Red



## Ceiling Horn/Strobes

PC2R	2-wire Horn/Strobe, Standard Candela, Red
PC2RH	2-wire Horn/Strobe, High Candela, Red
PC2W	2-wire Horn/Strobe, Standard Candela, White
PC2WH	2-wire Horn/Strobe, High Candela, White
PC4R	4-wire Horn/Strobe, Standard Candela, Red
PC4RH	4-wire Horn/Strobe, High Candela, Red
PC4W	4-wire Horn/Strobe, Standard Candela, White
PC4WH	4-wire Horn/Strobe, High Candela, White
PC2RK	2-wire Outdoor Horn/Strobe, Standard Candela, Red
PC2RHK	2-wire Outdoor Horn/Strobe, High Candela, Red
PC4RK	4-wire Outdoor Horn/Strobe, Standard Candela, Red,
PC4RHK	4-wire Outdoor Horn/Strobe, High Candela, Red



## Accessories

BBS-2	Wall Back Box Skirt, Red
BBSW-2	Wall Back Box Skirt, White
BBSC-2	Ceiling Back Box Skirt, Red
BBSCW-2	Ceiling Back Box Skirt, White



# Specifications

## Standard Operating Temperature

32°F to 120°F (0°C to 49°C)

## K Series Operating Temperature

-40°F to 151°F (-40°C to 66°C)

## Humidity Range

10% to 93% non-condensing (indoor products)

## Strobe Flash Rate

1 flash per second

## Nominal Voltage

Regulated 12 DC/FWR or regulated 24 DC/FWR<sup>1</sup>

## Operating Voltage Range<sup>2</sup>

8 V to 17.5 V (12 V nominal) or 16 V to 33 V (24 nominal)

## Input Terminal Wire Gauge

12 AWG to 18 AWG

## Ceiling Mount Dimensions (including lens)

6.8" Dia. x 2.5" H (173 mm Dia. x 64 mm H)

## Wall Mount Dimensions (including lens)

5.6" L x 4.7" W x 2.5" D (142 mm L x 119 mm W x 64 mm D)

## Horn Dimensions

5.6" L x 4.7" W x 1.3" D (142 mm L x 119 mm W x 33 mm D)

### Notes:

1. Full Wave Rectified (FWR) voltage is a non-regulated, time varying power source that is used on some power supply and panel outputs.

2. P, S, PC and SC products will operate at 12 V nominal only for 15 and 15/75 cd.

## UL Max. Strobe Current Draw (mA RMS)

	Candela	8-17.5 Volts		16-33 Volts	
		DC	FWR	DC	FWR
Standard Candela Range	15	123	128	66	71
	15/75	142	148	77	81
	30	NA	NA	94	96
	75	NA	NA	158	153
	95	NA	NA	181	176
	110	NA	NA	202	195
High Candela Range	115	NA	NA	210	205
	135	NA	NA	228	207
	150	NA	NA	246	220
	177	NA	NA	281	251
	185	NA	NA	286	258

## UL Max. Horn Current Draw (mA RMS)

Sound Pattern	dB	8-17.5 Volts		16-33 Volts	
		DC	FWR	DC	FWR
Temporal	High	57	55	69	75
Temporal	Medium	44	49	58	69
Temporal	Low	38	44	44	48
Non-temporal	High	57	56	69	75
Non-temporal	Medium	42	50	60	69
Non-temporal	Low	41	44	50	50
Coded	High	57	55	69	75
Coded	Medium	44	51	56	69
Coded	Low	40	46	52	50

### Rotary Horn and Horn/Strobe Switch Settings

Setting	Repetition Rate	dB Level
1	Temporal Horn	High
2	Temporal Horn	Medium
3	Temporal Horn	Low
4	Normal Horn	High
5	Normal Horn	Medium
6	Normal Horn	Low
7*	Externally Coded	High
8*	Externally Coded	Medium
9*	Externally Coded	Low

### Horn and Horn/Strobe Output (dBA)

Switch Position	Sound Pattern	dB	8–17.5 Volts		16–33 Volts	
			DC	FWR	DC	FWR
1	Temporal	High	78	78	84	84
2	Temporal	Medium	74	74	80	80
3	Temporal	Low	71	73	76	76
4	Non-temporal	High	82	82	88	88
5	Non-temporal	Medium	78	78	85	85
6	Non-temporal	Low	75	75	81	81
7*	Coded	High	82	82	88	88
8*	Coded	Medium	78	78	85	85
9*	Coded	Low	75	75	81	81

\*Settings 7, 8, and 9 are not available on 2-wire horn/strobes.

### UL Max. Current Draw (mA RMS), 2-wire Horn/Strobe, Standard Candela Range (15–115 cd)

DC Input	8–17.5 Volts		16–33 Volts						
	15	15/75	15	15/75	30	75	95	110	115
Temporal High	137	147	79	90	107	176	194	212	218
Temporal Medium	132	144	69	80	97	157	182	201	210
Temporal Low	132	143	66	77	93	154	179	198	207
Non-temporal High	141	152	91	100	116	176	201	221	229
Non-temporal Medium	133	145	75	85	102	163	187	207	216
Non-temporal Low	131	144	68	79	96	156	182	201	210
FWR Input									
Temporal High	136	155	88	97	112	168	190	210	218
Temporal Medium	129	152	78	88	103	160	184	202	206
Temporal Low	129	151	76	86	101	160	184	194	201
Non-temporal High	142	161	103	112	126	181	203	221	229
Non-temporal Medium	134	155	85	95	110	166	189	208	216
Non-temporal Low	132	154	80	90	105	161	184	202	211

### UL Max. Current Draw (mA RMS), 2-wire Horn/Strobe, High Candela Range (135–185 cd)

DC Input	16–33 Volts				FWR Input	16–33 Volts			
	135	150	177	185		135	150	177	185
Temporal High	245	259	290	297	Temporal High	215	231	258	265
Temporal Medium	235	253	288	297	Temporal Medium	209	224	250	258
Temporal Low	232	251	282	292	Temporal Low	207	221	248	256
Non-temporal High	255	270	303	309	Non-temporal High	233	248	275	281
Non-temporal Medium	242	259	293	299	Non-temporal Medium	219	232	262	267
Non-temporal Low	238	254	291	295	Non-temporal Low	214	229	256	262



## The Power Behind The Products

System Sensor, a Honeywell International company, was founded in 1984 and today is the largest manufacturer of fire detection and notification appliances in the world. Over 1,900 System Sensor associates collaborate worldwide to build quality products within conventional detection, intelligent detection, audible and visible (AV) notification, heating, ventilation, air conditioning (HVAC) monitoring and sprinkler systems monitoring. We attribute the demand for our products to our high production standards and strong communication with our customers. Every day we aim to develop advanced ideas that deliver advanced solutions for our customers.

For more information, please call 800-SENSOR2 for a free E•DOCS CD-ROM, a comprehensive resource of technical information, or visit our website at [www.systemsensor.com](http://www.systemsensor.com).



advanced ideas. advanced solutions.™

**8 0 0 / 7 3 6 - 7 6 7 2**  
[www.systemsensor.com](http://www.systemsensor.com)