

## NDA-U-PSU1H PSU, IR, 120VAC, for NDA-7100-PEN/PENF



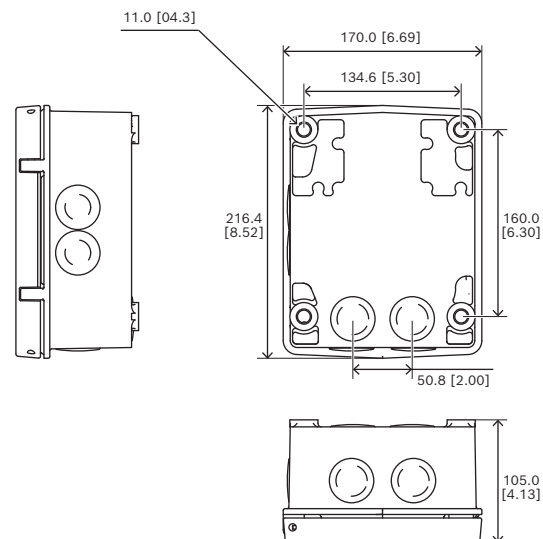
- ▶ Aluminum enclosure rated to IP66 and UL Type 4X to prevent dust and water ingress
- ▶ IK10 impact rating ensures enclosure integrity
- ▶ 120 VAC to 24 VAC transformer
- ▶ For applications without PoE or for redundant power applications with PoE

### Regulatory information

For a full list of all related certifications/standards, refer to the Product Test Reports, available on the online catalog, on the Documents tab of the product page for your device. If the document is unavailable on the product page, contact your sales representative.

Product Safety	Complies with EN, IEC, UL Standards including: UL 62368-1 2nd Ed CAN/CSA C22.2 No. 62368-1-1 IEC 62368-1:2014 EN 62368-1:2014+A11:2017 UL 62368-1 3rd Ed CSA C22.2 No. 62368-1:19 IEC 62368-1:2018 EN IEC 62368-1:2020+A11:2020
Electromagnetic Compatibility (EMC)	Complies with FCC Part 15, ICES-003 Issue 7 (for Canada only), and CE regulations, including latest versions of: EN 50130-4: 2011 EN 55032: 2015 + A11: 2020 (Class A) EN 61000-3-2: 2014 EN 61000-3-3: 2013 FCC 47 Part 15 B (Class A) CISPR 32 (Class A)
RoHS	Complies with EN IEC 63000:2018

### Installation/configuration notes



#### Dimensions in mm (inch)

These units can be mounted directly to a wall or other flat surface. Optional pole and corner mounting accessories are also available, allowing you to tailor your AUTODOME installation to your specific requirements. Multiple cable gland/conduit entry points protect cables and simplify installation. Each unit has a cover door that provides IP rating IP66 / UL Type 4X ingress protection and meets power and electrical safety requirements in extreme environmental conditions. The unique design and the IK10 rating protect the power supply units from vandalism and tampering events.

**Parts included**

Quantity	Component
1	NDA-U-PSU1H power supply box
1	Quick installation guide
1	Safety instructions

**Technical specifications****Electrical**

Input voltage (VAC)	120 VAC $\pm$ 10%, 50/60 Hz
Output voltage (VAC)	24 VAC @ 3.5A, 50/60 Hz (IEC 62638-1 Limited Power Source)

**Note:** 24 VAC @ 2 A is not used.

**Mechanical**

Dimensions (H x W x D) (mm)	216.4 mm x 170 mm x 105 mm
Dimensions (H x W x D) (in)	8.52 in x 6.69 in x 4.13 in
Color (RAL)	RAL 9003 Signal white
Material	Cast solid aluminum
Material finish	Powder coated, Sand finish

**Environmental**

Operating temperature (°C)	-60 °C – 60 °C
Operating temperature (°F)	-76 °F – 140 °F
Operating relative humidity, condensing (%)	0% – 100%
IP rating	IP66
Impact protection	IK10 (IEC 62262)
Degree of protection	UL type 4X

**Ordering information****NDA-U-PSU1H PSU, IR, 120VAC, for NDA-7100-PEN/PENF**

Stand-alone power supply unit without transformer,  
120 VAC, IK10, for AUTODOME 7100i IR cameras  
Order number **NDA-U-PSU1H**



<https://www.boschsecurity.com>