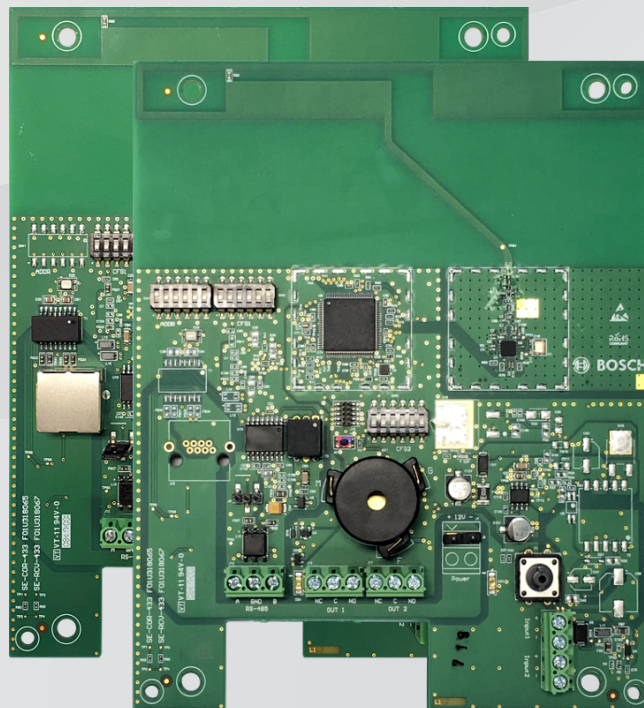




**BOSCH**

# Security Escort Coordinator & Receiver

SE-COR-433 & SE-RCV-433



en

Installation Manual



## Table of contents

<b>1</b>	<b>Copyright, Safety and Warranty</b>	<b>5</b>
1.1	Copyright information	5
1.2	Important safety notes	6
1.3	Safety precautions	7
1.4	Certification information	7
1.4.1	FCC/IC information	7
1.4.2	Other certification information	8
<b>2</b>	<b>System Overview</b>	<b>9</b>
<b>3</b>	<b>Mounting the Device</b>	<b>10</b>
3.1	Indoor installation	10
3.1.1	Spacing	10
3.1.2	Mounting height	10
3.1.3	Multi-floor installations	10
3.2	Outdoor installation	11
3.2.1	Spacing	11
3.2.2	Mounting height	11
3.2.3	Overhangs/eaves	11
3.3	Pre-wired installations	11
3.4	Drilling templates	12
3.4.1	Drilling template for outdoor enclosure bottom entry	13
3.4.2	Drilling template for outdoor enclosure rear entry	14
<b>4</b>	<b>Layout and Wiring of the Device</b>	<b>15</b>
4.1	Layout of the coordinator/receiver	16
4.1.1	Layout of the coordinator	16
4.1.2	Layout of the receiver	17
4.2	Wiring guidelines	18
4.2.1	Indoor wiring diagram with APS-PSU-60 using 18 AWG cable	19
4.2.2	Indoor wiring diagram with APS-PSU-60 using 24 AWG cable	21
4.3	Power supply connector	23
4.4	Power over Ethernet (PoE) connector	23
4.5	RS-485 communication connector	23
4.6	RS-485 jumpers	24
4.7	Input connectors	24
4.8	Battery monitoring with APS-PSU-60	24
4.9	Output connectors	25
4.10	LED indicators	26
4.11	Tamper switch	26
4.12	Reset button	26
<b>5</b>	<b>Setting the Switches and Jumpers</b>	<b>27</b>
5.1	Setting the loop address	28
5.2	Selecting the hard/soft reset mode	28
5.3	Setting the baud rate	29
5.4	Enable/disable the buzzer	29
5.5	Enable/disable the spacing mode	29
5.6	Setting the jumpers for RS-485 communication loop	30
<b>6</b>	<b>Troubleshooting the Device</b>	<b>32</b>
6.1	Checking the power supply	32
6.2	Checking Power over Ethernet (PoE)	32

---

6.3	Checking the RS-485 communication	32
6.4	Resetting the coordinator/receiver	32
6.5	Upgrading coordinator/receiver firmware	33
6.6	Checking address conflicts	33
<b>7</b>	<b>Appendices</b>	<b>34</b>
7.1	Differences between hard and soft reset mode on the coordinator/receiver	34

# 1 Copyright, Safety and Warranty

## 1.1 Copyright information

All rights reserved. No part of this manual may be reproduced, stored in a retrieval system, or transmitted in any form or by any means, electronic, mechanical, photocopying, recording, or otherwise, without the prior written permission of BOSCH SECURITY SYSTEMS.

This manual is provided pursuant to a license agreement containing restrictions on their use. The manual contains valuable trade secrets and proprietary information of BOSCH SECURITY SYSTEMS and is protected by international copyright law. It may not be copied or distributed to third parties, or used in any manner not provided for in the said license agreement.

All software is provided "AS IS." The sole obligation of BOSCH SECURITY SYSTEMS shall be to make available all published modifications that correct program problems are published within one (1) year from the date of shipment.

The software is intended for use only with the hardware specified in this manual and in the absence of other software. Concurrent use with other software or with hardware not specified may cause the program to function improperly or not at all. BOSCH SECURITY SYSTEMS may not provide support for systems operating under such conditions.

All efforts have been made to ensure the accuracy of the contents of this manual. The above notwithstanding, BOSCH SECURITY SYSTEMS assume no responsibility for any errors in this manual or their consequences.

The information on this document is subject to change without notice.

Other product and company names mentioned herein may be the trademarks of their respective owners.

## 1.2 Important safety notes

1. **Read, Follow, and Retain Instructions** – All safety and operating instructions must be read and followed properly before putting the unit into operation. Retain instructions for future reference.
2. **Consider all Warnings** – Adhere to all warnings on the unit and in the operating instructions.
3. **Accessories** – Use only accessories recommended by the manufacturer or those sold with the product. Accessories not recommended by the manufacturer shall not be used, as they may cause hazards.
4. **Installation Precautions** – Do not place this unit on an unstable stand, tripod, bracket, or mount. The unit may fall, causing serious injury to persons and damage to the unit. Mount the unit according to the manufacturer's instructions.
5. **Service** – Do not attempt to service this unit by yourself. Opening or removing covers may expose you to dangerous voltages or other hazards. Refer all servicing to qualified service personnel.
6. **Damage Requiring Service** – Disconnect the unit from the main AC or DC power source and refer servicing to qualified service personnel under the following conditions:
  - When the power supply cord or plug is damaged.
  - If liquid has been spilled or an object has fallen into the unit.
  - If the unit has been exposed to water and/or inclement weather (rain, snow, etc.).
  - If the unit does not operate normally, when following the operating instructions. Adjust only those controls specified in the operating instructions. Improper adjustment of other controls may result in damage, and require extensive work by a qualified technician to restore the unit to normal operation.
  - If the unit has been dropped or the cabinet damaged.
  - If the unit exhibits a distinct change in performance, this indicates that service is needed.
7. **Replacement Parts** – When replacement parts are required, the service technician shall use replacement parts that are specified by the manufacturer. Unauthorized substitutions may result in fire, electrical shock or other hazards.
8. **Safety Check** – Upon completion of service or repair work on the unit, ask the service technician to perform safety checks to ensure that the unit operates properly.
9. **Power Sources** – Operate the unit only from the type of power source indicated on the label. If unsure of the type of power supply to use, contact your dealer.
  - For units intended to operate from battery power, refer to the operating instructions.
  - For units intended to operate with External Power Supplies, use only the recommended approved power supplies.
10. **Lightning** – For added protection during a lightning storm, or when this unit is left unused for long periods of time, disconnect the unit from power. This will prevent damage to the unit due to lightning and excessive power line surges.
11. **Restricted Access Locations** are required for the installation.

## 1.3 Safety precautions



### Disposal

Your Bosch product has been developed and manufactured using high-quality materials and components that can be reused.

This symbol means that electronic and electrical devices that have reached the end of their working life must be disposed of separately from household waste.

In the EU, separate collecting systems are already in place for used electrical and electronic products. Please dispose of these devices at your local communal waste collection point or at a recycling center.

## 1.4 Certification information

### 1.4.1 FCC/IC information

This device complies with Part 15 FCC Rules and Industry Canada's license-exempt RSSs. Operation is subject to the following two conditions: (1) this device may not cause harmful interference, and (2) this device must accept any interference received including interference that may cause undesired operation.

Le présent appareil est conforme aux CNR d'Industrie Canada applicables aux appareils radio exempts de licence. L'exploitation est autorisée aux deux conditions suivantes: (1) l'appareil ne doit pas produire de brouillage, et (2) l'utilisateur de l'appareil doit accepter tout brouillage radioélectrique subi, même si le brouillage est susceptible d'en compromettre le fonctionnement.

Changes or modifications not expressly approved by the party responsible for compliance could void the user's authority to operate the equipment.

This equipment has been tested and found to comply with the limits for a Class B digital device, pursuant to Part 15 of the FCC Rules. These limits are designed to provide reasonable protection against harmful interference in a residential installation. This equipment generates, uses and can radiate radio frequency energy and, if not installed and used in accordance with the instructions, may cause harmful interference to radio communications. However, there is no guarantee that interference will not occur in a particular installation.

If this equipment does cause harmful interference to radio or television reception, which can be determined by turning the equipment off and on, the user is encouraged to try to correct the interference by one or more of the following measures:

1. Reorient or relocate the receiving antenna.
2. Increase the separation between the equipment and receiver.
3. Connect the equipment into an outlet on a circuit different from that to which the receiver is connected.
4. Consult the dealer or an experienced radio/TV technician for help.

**Manual information to the end user**

The OEM integrator has to be aware not to provide information to the end user regarding how to install or remove this RF module in the user's manual of the end product which integrates this module.

The end user manual shall include all required regulatory information/warning as shown in this manual.

**End product labeling**

Please notice that if the IC identification number is not visible when the module is installed inside another device, then the outside of the device into which the module is installed must also display a label referring to the enclosed module. This exterior label can use wording such as the following: "Contains IC: 22874-CORRCV433" any similar wording that expresses the same meaning may be used.

**1.4.2****Other certification information**

Complies with IMDA Standards DA105282
---

## 2 System Overview

The coordinator provides communication between the Central Console software and the many receivers throughout the protected area. The receiver detects alarm signals from the transmitter, and sends the signal to the coordinator through wired RS-485. The coordinator forwards this information to the Central Console software over wired Ethernet (TCP/IP), where the alarm will be processed accordingly. Each coordinator (with its built-in receiver) also includes two analog inputs which support 4 state supervised modes, and drivers for two relay outputs.

The receiver is designed to work with the Security Escort system throughout a protected area, including building interiors. Each receiver contains a radio receiver to detect the transmissions from transmitters, and a microcomputer to decode and interpret test and alarm messages. Multiple receivers detect the same transmission and send the signal information to the coordinator, so that the system can identify the transmitting information, including the device and location. The receiver also monitors housing tampering and radio jamming, and reports them to the coordinator.

Indoor coordinators/receivers are typically mounted on inside walls, and have one red and one green LED. The green LED is used to indicate a successful test of a personal transmitter. The red LED is illuminated during alarms. Each coordinator/receiver contains a piezo-electric buzzer that can be activated if an alarm transmission is detected.

Outdoor coordinators/receivers are contained in small weatherproof boxes, typically mounted on the sides of buildings and on light posts. Outdoor coordinators/receivers do not have the visible red and green LED's. For outdoors, the relay outputs can be connected to devices to be used to acknowledge successful tests and alarms.

## 3 Mounting the Device

Choose a mounting location based on the previous site survey. Mount the coordinator/receiver as close as possible to the location found with the test coordinator/receiver. Use the following sections as a guideline for coordinator/receiver mounting and spacing.

### 3.1 Indoor installation

Select a mounting location that:

- provides a clear line-of-sight of the protected area, if possible.
- is at least 31 cm (1 ft.) away from metal objects such as HVAC ducts.
- is on an inside wall, if possible.
- is 1.5 m to 1.8 m (5 ft. to 6 ft.) from the floor.
- is not at a barrier where it is important to resolve which side an alarm location is on.
- is not damaged by tampering or opening doors.

#### 3.1.1 Spacing

Coordinator/receiver spacing should be no more than 25 m (80 ft.) between each coordinator/receiver for standard construction. Range depends on the construction of the building. For example, a building with hollow drywalls may support 25 m (80 ft.) spacing, but a building with steel reinforced concrete may require reduced spacing. It is very important to maintain a consistent spacing as this ensures optimum signal locating. The better the coordinator/receivers can detect a transmitted signal, the more accurate the locating.

#### 3.1.2 Mounting height

Mount coordinator/receivers 1.5 m to 1.8 m (5 ft. to 6 ft.) from the floor. Maintain a consistent mounting height to ensure optimum signal locating. Do not place coordinator/receivers close to the ceiling. This places them closer to the floor above reducing the floor-to-floor location accuracy. It is also helpful to place the coordinator/receivers somewhat higher on the top floor to be covered and somewhat lower on the bottom floor to be covered.

#### 3.1.3 Multi-floor installations

Mount coordinator/receivers over one another in multi-floor installations. This helps maintain proper floor-to-floor reception.

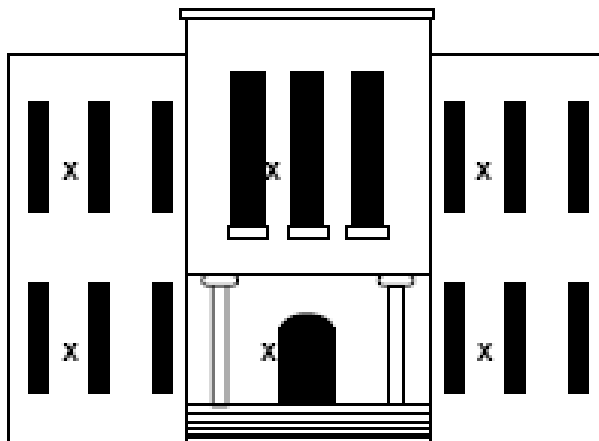


Figure 3.1: Coordinator/receiver locations

x	Coordinator/Receiver location inside building
---	---

## 3.2 Outdoor installation

Select a mounting location that:

- provides a clear line-of-sight of the protected area.
- is away from metallic objects such as chain-link fences and electrical transformers. If coverage is required near such items, perform testing near them to determine the potential need for additional receivers.
- is 3 m (10 ft.) above grade.
- is not at a barrier where it is important to resolve which side an alarm location is on.
- is easy to service.
- is not damaged by tampering.

### 3.2.1 Spacing

Mount coordinators/receivers every 90 m (300 ft.). It is very important to maintain spacing as consistent as possible to ensure optimum signal locating. The more the coordinators/receivers can detect a transmitted signal, the more accurate the locating. Make sure each coordinator/receiver has a clear line-of-sight of the intended protection area.

### 3.2.2 Mounting height

Mount coordinators/receivers 3 m (10 ft.) above ground. Maintain a mounting height that is as consistent as possible to ensure optimum signal locating.

### 3.2.3 Overhangs/eaves

Coordinator/receiver locations should be below building overhangs and eaves. Most transmissions occur 1 m (a few feet) above ground. Therefore, mounting above overhangs and eaves can result in inaccurate signal locating. Be especially careful around metal roofs as these can block the signal.

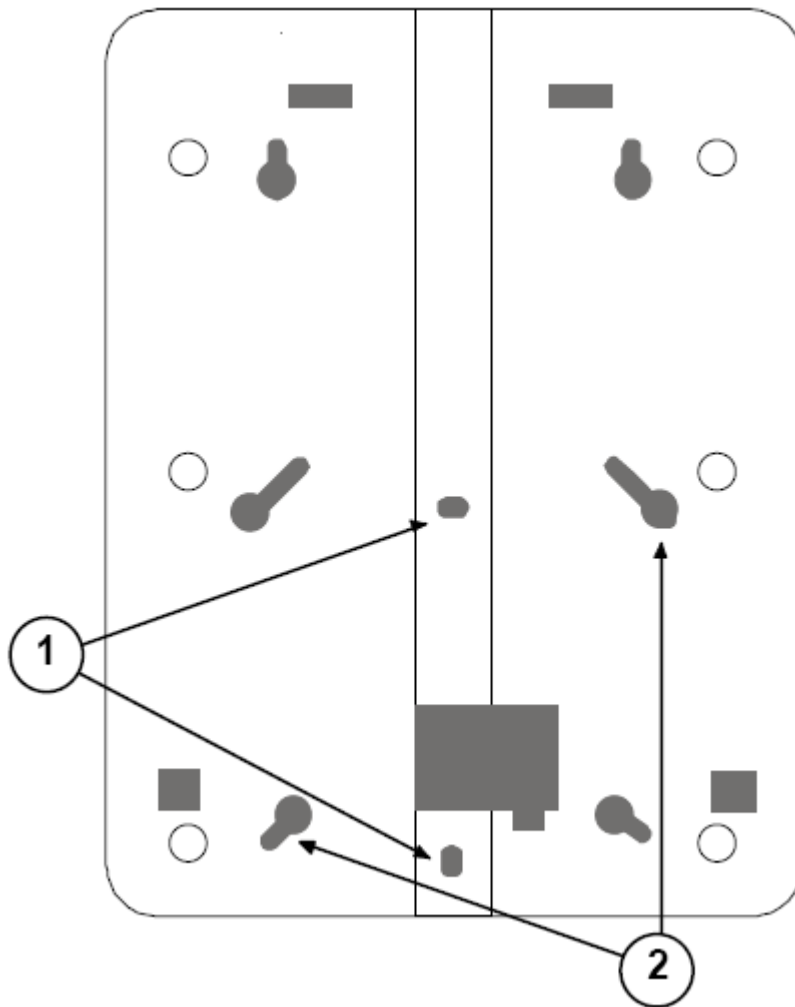
## 3.3 Pre-wired installations

When mounting the enclosure to a pre-wired electrical box, make sure that the electrical box has a 15.2 cm (6 in.) overhead clearance. The enclosure should be mounted as shown in figure below.



#### Notice!

The enclosure does not currently support octagonal electrical boxes.



**Figure 3.2: Back of indoor enclosure**

1	Use with single-gang electrical boxes
2	Use with 8.9 cm (3½ in.) square electrical boxes

### 3.4

#### Drilling templates

Use the following templates for mounting the outdoor enclosure. For enclosure with bottom entry, see *Drilling template for outdoor enclosure bottom entry*, page 13. For enclosure with rear entry, see *Drilling template for outdoor enclosure rear entry*, page 14.

### 3.4.1 Drilling template for outdoor enclosure bottom entry

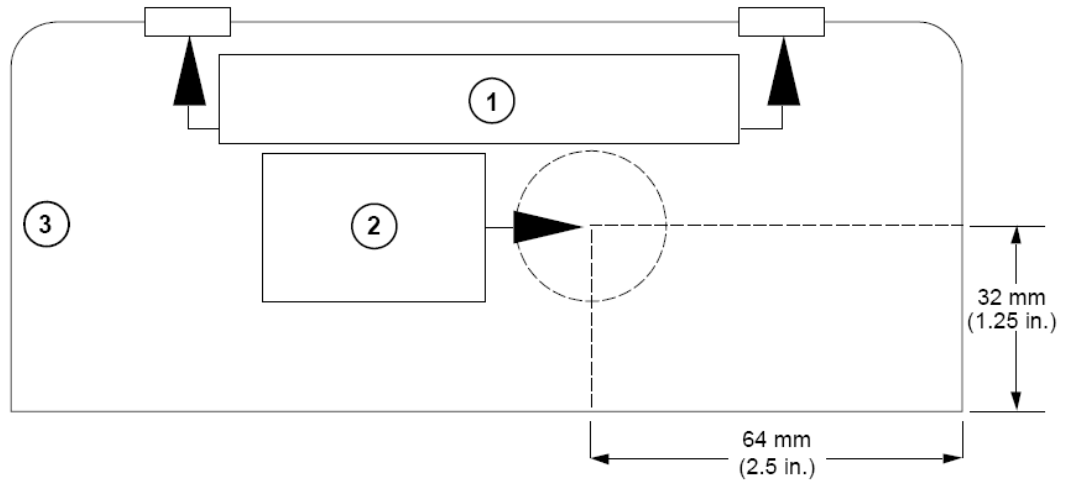
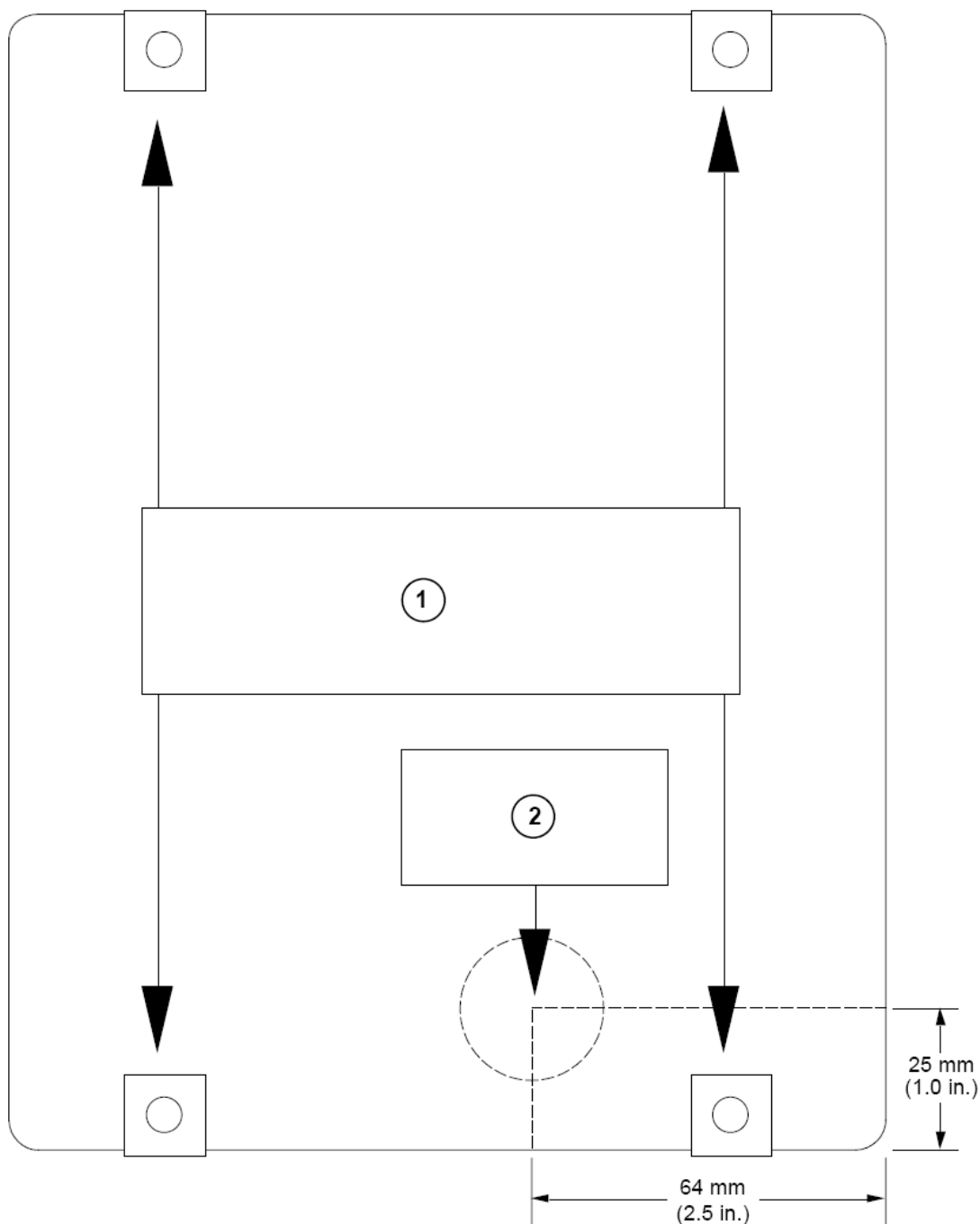


Figure 3.3: Drilling template bottom entry

1	Align template with mounting hole squares on box
2	Drill here, 25 mm (1 in.) diameter maximum; 19 mm (¾ in.) conduit.
3	Bottom entry

### 3.4.2 Drilling template for outdoor enclosure rear entry



**Figure 3.4: Drilling template rear entry**

1	Align template with mounting holes on backside of box.
2	Drill here, 25 mm (1 in.) diameter maximum; 19 mm (¾ in.) conduit.

---

## 4

# Layout and Wiring of the Device

---

**Danger!**

Apply the electrical power only after all connections are completed and inspected.

---

This section identifies and locates the key components on the coordinator/receiver.

## 4.1 Layout of the coordinator/receiver

### 4.1.1 Layout of the coordinator

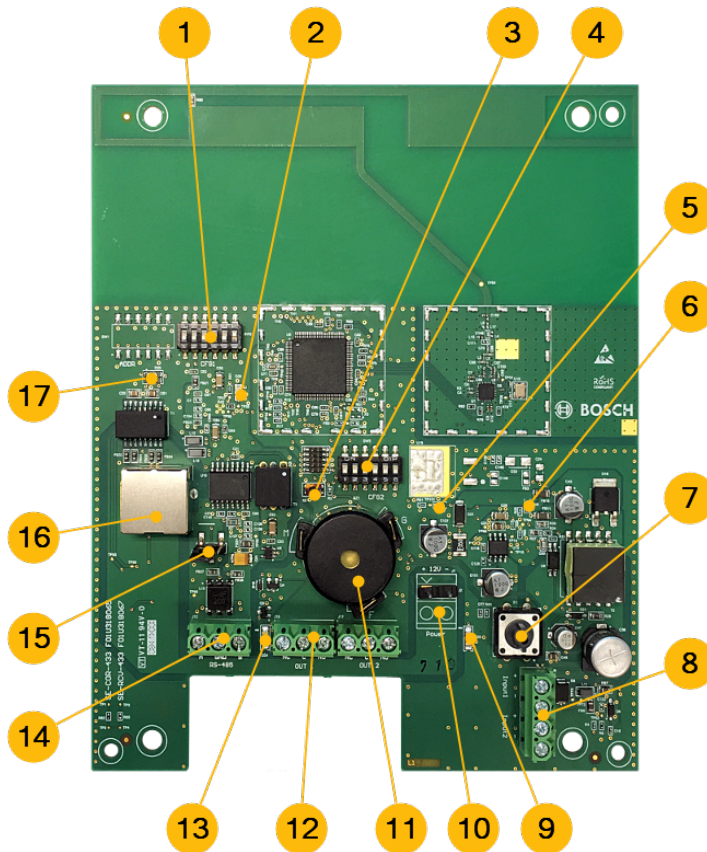


Figure 4.1: Layout of coordinator

1	Dip switch CFG1	10	Power supply connector
2	Ethernet LED	11	Buzzer
3	Reset button	12	Output connectors
4	Dip switch CFG2	13	Green LED
5	Power supply LED	14	RS-485 communication connector
6	Power over Ethernet (PoE) LED (not available on receiver)	15	RS-485 jumper
7	Tamper switch	16	Power over Ethernet (PoE) connector (not available on receiver)
8	Input connectors	17	Tricolor LED
9	Red LED		

### 4.1.2 Layout of the receiver

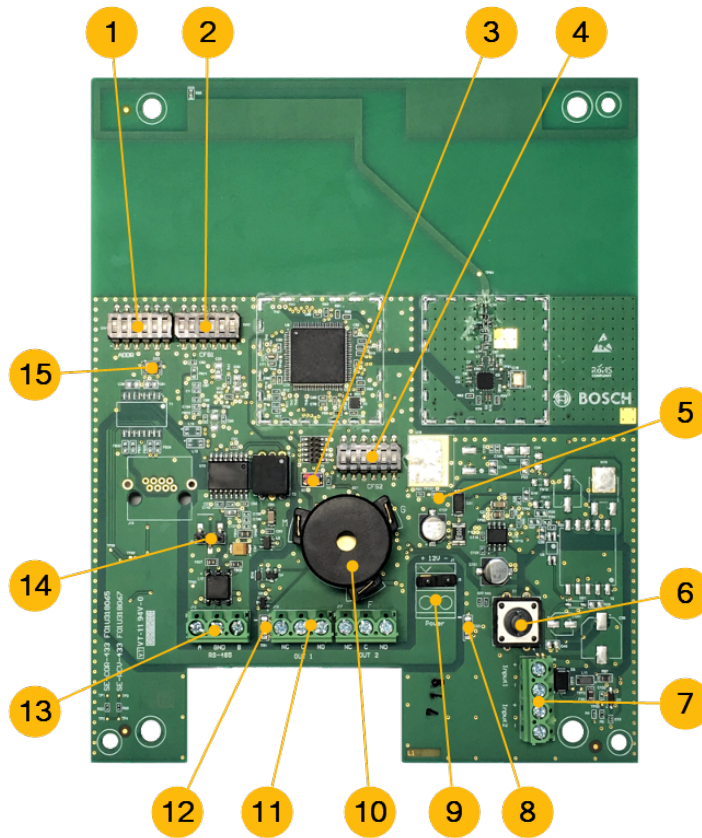


Figure 4.2: Layout of receiver

1	Dip switch ADDR (not available on coordinator)	9	Power supply connector
2	Dip switch CFG1	10	Buzzer
3	Reset button	11	Output connectors
4	Dip switch CFG2	12	Green LED
5	Power supply LED	13	RS-485 communication connector
6	Tamper switch	14	RS-485 jumpers
7	Input connectors	15	Tricolor LED
8	Red LED		

## 4.2 Wiring guidelines

The following table indicates the specifications for the wiring:

From	To	Signal Type	Gauge	Max. Length	Remark
Coordinator / Receiver	Receiver	RS-485	#24	1000 m per bus	Twisted pair Cat5e cable recommended. Shielded cable may be required for outdoor use.
	Power Supply	Power	#18	Please refer to the sections below for detailed specification.	
			#24		
	Input 1 or 2	I/O	#18	15 m	Solid, not twisted, not shielded
Output 1 or 2	I/O	#18	15 m	Solid, not twisted, not shielded	
Coordinator	Host PC	Ethernet / PoE	Cat5e UTP	100 m	Shielded cable may be required for outdoor use

**Tab. 4.1:** Specifications for Wiring

### 4.2.1 Indoor wiring diagram with APS-PSU-60 using 18 AWG cable

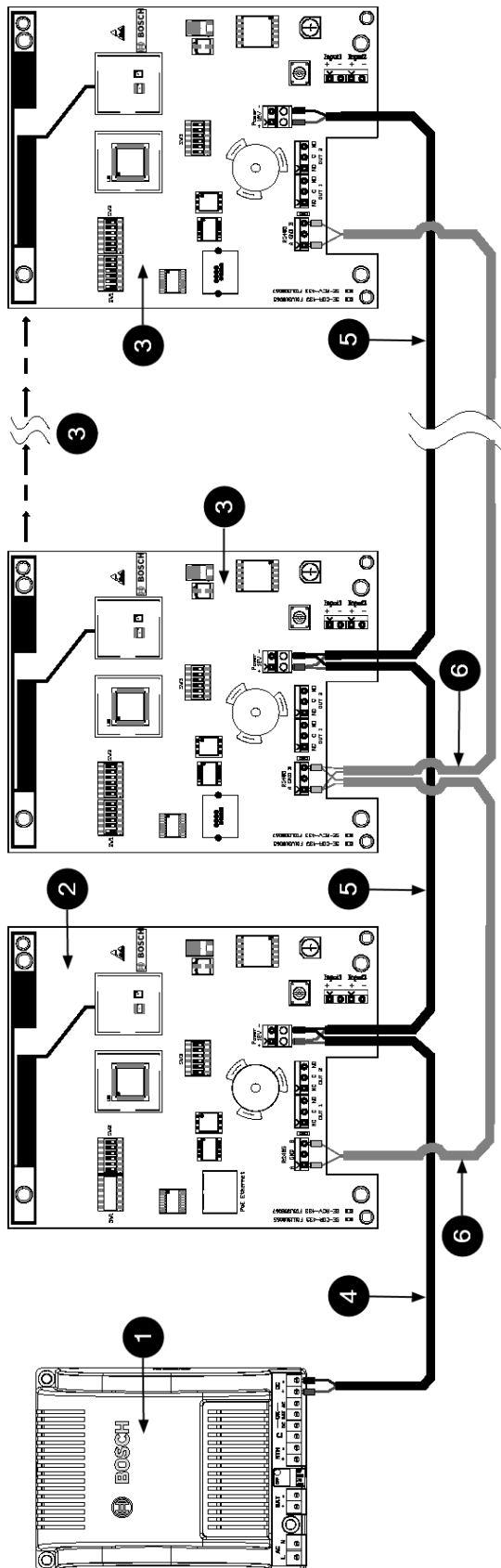


Figure 4.3: Wiring diagram example for indoor configuration using 18 AWG cable for input power

Item	Specification	Description	Quantity	Remarks
1	APS-PSU-60	Power supply	1	Output voltage set to 24V mode
2	SE-COR-433	Coordinator board	1	
3	SE-RCV-433	Receiver board	Up to 15	Maximum number of receivers that can be connected to the coordinator
4	18 AWG, 2 wires not twisted multi strands	15 m power cable from power supply to coordinator	1	Wire color: - red for ( + ) input - black for ( - ) input
5	18 AWG, 2 wires not twisted multi strands	24 m power cable from coordinator / receiver to receivers	Up to 15	Wire color: - red for ( + ) input - black for ( - ) input
6	4x2x24 AWG, Cat5e twisted multi strands	24 m twister pair RS-485 cable from coordinator / receiver to receivers	Up to 15	Wire color: - orange/white for RS-485 (A) - white/orange for RS-485 (B)

**Notice!**

Wire colors of Cat5e cable mentioned above may differ in other countries, depending on color coding standard.

**Notice!**

Please refer to the *PSU-60 - AMC Power Supply Unit Quick Installation Guide* for the configuration of APS-PSU-60.

### 4.2.2 Indoor wiring diagram with APS-PSU-60 using 24 AWG cable

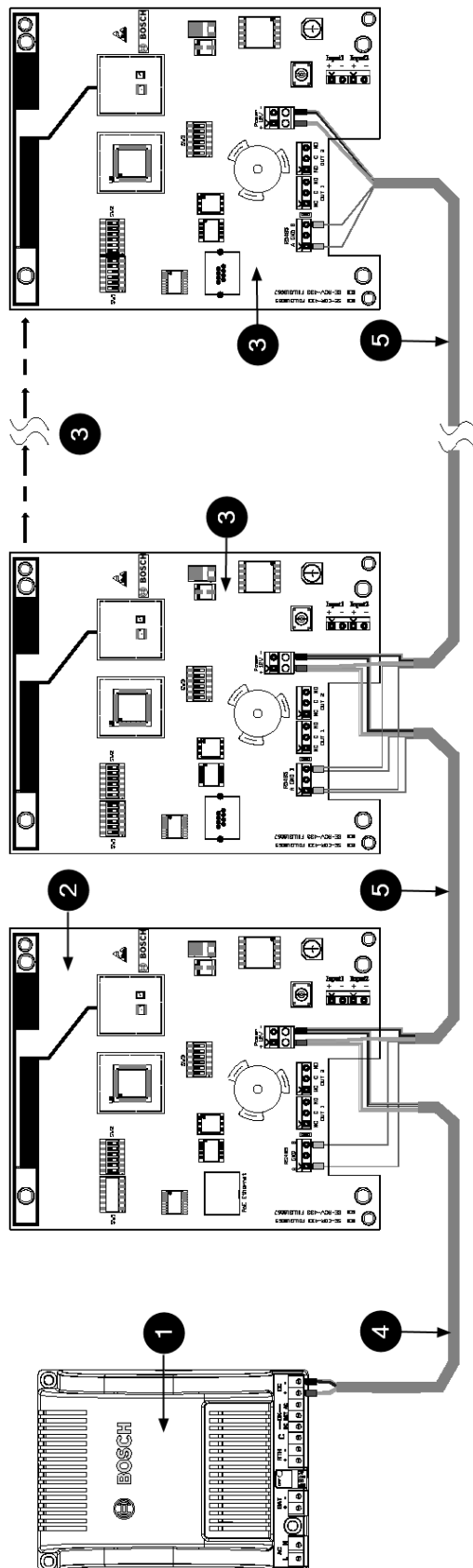


Figure 4.4: Wiring diagram example for indoor configuration using 24 AWG cable for input power

Item	Specification	Description	Quantity	Remarks
1	APS-PSU-60	Power supply	1	Output voltage set to 24V mode
2	SE-COR-433	Coordinator board	1	
3	SE-RCV-433	Receiver board	Up to 15	Maximum number of receivers that can be connected to the coordinator
4	4x2x24 AWG, Cat5e twisted multi strands	15 m power cable from power supply to coordinator ( <b>use 3 pairs</b> )	1	Wire color: - brown/white and white/brown and green/white for ( + ) input - blue/white and white/blue and white/green for ( - ) input
5	4x2x24 AWG, Cat5e twisted multi strands	24 m power cable from coordinator / receiver to receivers ( <b>use 3 pairs</b> ) - 1 twisted pair for RS-485 communication	Up to 15	Wire color: - brown/white and white/brown and green/white for ( + ) input - blue/white and white/blue and white/green for ( - ) input - orange/white for RS-485 (A) - white/orange for RS-485 (B)

**Notice!**

Wire colors of Cat5e cable mentioned above may differ in other countries, depending on color coding standard.

**Notice!**

Please refer to the *PSU-60 - AMC Power Supply Unit Quick Installation Guide* for the configuration of APS-PSU-60.

### 4.3 Power supply connector

The coordinator/receivers can be powered by an external power source with 60 VA (watts). It consists of two terminals: one of which is used to provide the positive input, and the other the negative input. The operating input voltage is 24V.



Figure 4.5: Power Supply Connector

### 4.4 Power over Ethernet (PoE) connector

Power over Ethernet (PoE) is applicable to coordinators only. Receivers do not have the Ethernet interface ports. The coordinators can be powered by PoE without needing an external DC input. The PoE connector is identified by the label PoE Ethernet on the coordinator. Connect the PoE using the standard Cat 5e Ethernet cable and above. PoE provides the maximum total power of 12.95 Watt to the coordinator, and complies with the IEEE802.3af class 0 standard.

The coordinator also sends any received data from the receivers or transmitters to the Central Console Software via the Ethernet cable. The coordinator is pre-configured with the following default IP settings:

IP Settings	Value
IP Address	192.168.1.100
Subnet Mask	255.255.255.0
Gateway	192.168.1.1
Port	20000

Tab. 4.2: Default IP Settings of Coordinator

The default settings can be changed using the Utility Tool from the Security Escort software. See the *Security Escort Hardware and Software Installation* for more information.

### 4.5 RS-485 communication connector

The coordinator and receivers communicate with each other using the RS-485 interface. The communication connector is identified by their 3 terminal points, namely A, GND and B. The recommended data transmission speed is 19200 bps @ 1km (default) and 115 kbps @ 500m. Please refer to the table below for the full range of data transmission speeds:

Data transmission speed (bps)	Range (m)
19200	1000
38400	900
57600	800
115200	500

Tab. 4.3: Range of data transmission speeds

The recommended wiring for RS-485 communication is 24-AWG Cat5e using 4-conductors, with unshielded twisted pair for indoor installations, and shielded twisted pair for outdoor installations.

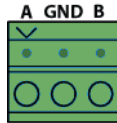


Figure 4.6: RS-485 Connector

## 4.6 RS-485 jumpers

The coordinator and receivers use RS-485 multi-drop communication channels between the device boards. It is necessary to include end-of-line jumper settings on the last receiver to have a stable communication channel (see *Setting the jumpers for RS-485 communication loop*, page 30). The jumper blocks are identified as J5 on the coordinator/receiver.

## 4.7 Input connectors

Two 2-pin connectors on the left side of the coordinator/receiver provide terminal points for wiring from input devices. The terminal strips are identified as Input1 and Input2 on the coordinator/receiver. There are two terminals for each input point.

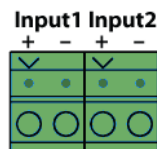


Figure 4.7: Input Connectors

Each input point supports four-state supervised mode. To detect the four states, there are special values allowed for potential drop depending on the resistors used. The coordinator/receiver can also detect short and open wiring conditions and initiate an alarm if the appropriate devices are connected.

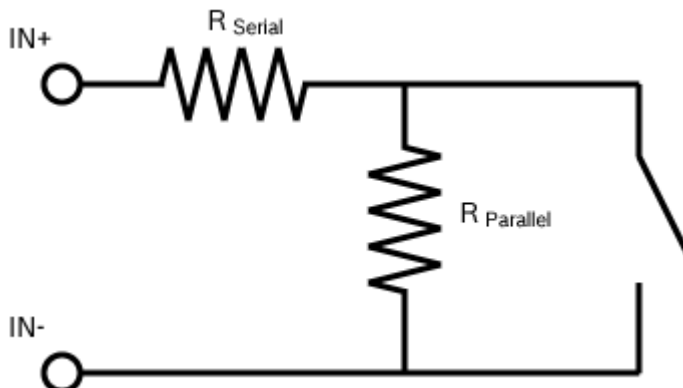


Figure 4.8: Circuit Diagram for Resistors

$$R_s = R_p = 2.2 \text{ k}\Omega \text{ } \frac{1}{4}\text{W}$$

## 4.8 Battery monitoring with APS-PSU-60

The coordinator/receiver can also be powered by the APS-PSU-60 Power Supply Unit. The APS-PSU-60 Power Supply Unit is connected to both the Input1 and Input2 connectors on the coordinator/receiver. Please refer to *Wiring guidelines*, page 18 for the specification of the wiring between coordinator/receiver and APS-PSU-60 Power Supply Unit.

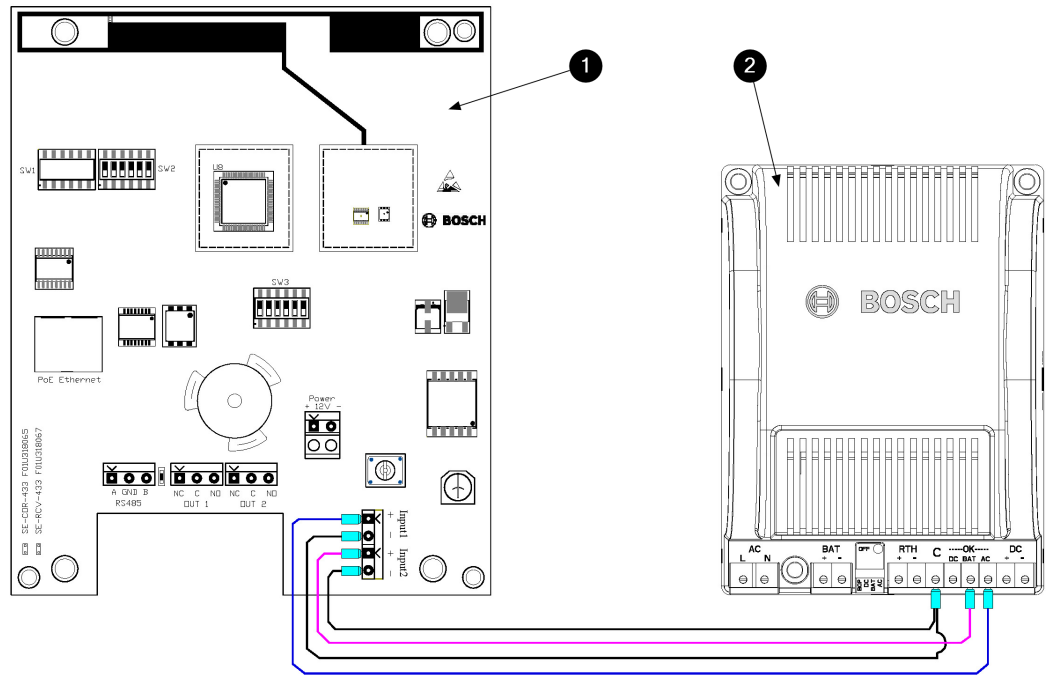


Figure 4.9: Connection Diagram with PSU-60

1	Coordinator/Receiver	2	APS-PSU-60 Power Supply Unit
---	----------------------	---	------------------------------

Please refer to the *Quick Installation Guide* of the APS-PSU-60 Power Supply Unit for the wiring termination details.

## 4.9 Output connectors

Two 3-pin connectors provide terminal points for connection of external devices. The connectors are identified as OUT 1 and OUT 2 on the coordinator/receiver. The output terminals are Form-C type relay dry contacts. For each relay, Normally Closed (NC), Normally Open (NO) and Common (C) terminals are provided.

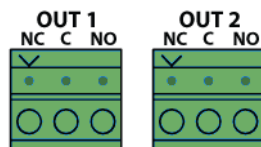


Figure 4.10: Output Connectors

## 4.10 LED indicators

The following section describes the behaviors of the various LEDs upon device start up and during system operation.

LED	Event/Condition	Behavior of LED
Power Supply	Powered by DC input	Lights up in orange
Power over Ethernet (PoE)	Powered by PoE input	Lights up in red
Green	Every successful transmission test	Lights up briefly in green
Red	Every alarm/specific system test in progress	Lights up briefly in red
Tricolor LED	Coordinator/receiver communicating via RS-485	Blinks in pink every 3 seconds
	No communication between coordinator and receiver	Does not light up
	Coordinator/receiver communicating with transmitter via RF	Blinks in blue for any transmission events if the signal strength is excellent
		Blinks in green for any transmission events if the signal strength is average
		Blinks in red for any transmission events if the signal strength is poor

Tab. 4.4: Behavior of LED indicators



### Notice!

The power supply, PoE and tricolor LEDs are only visible if you remove the casing enclosure.

## 4.11 Tamper switch

To protect the coordinator/receiver against unauthorized access, an additional interface to detect tamper contact is used. The tamper switch is triggered when the coordinator/receiver is not covered in the casing enclosure. This event is monitored and reported to the Central Console Software where any subsequent actions are determined by the configured software settings. It is recommended that the coordinator/receiver should be covered in the casing at all times.

## 4.12 Reset button

A reset button is available on the coordinator/receiver. This button can be used to perform a hard or soft factory reset based on the associated dip switch setting (see *Selecting the hard/soft reset mode*, page 28). Depending on the hard or soft reset, pressing it will clear specific sets of configuration for the device. For more information, please refer to *Resetting the coordinator/receiver*, page 32.

## 5 Setting the Switches and Jumpers

There are three dip switches on the receiver, namely ADDR, CFG1 and CFG2. Dip switch ADDR is not mounted on the coordinator. Therefore, only dip switches CFG1 and CFG2 are available on the coordinator.

Use the ADDR dip switch to configure the address of the receiver. CFG1 and CFG2 dip switches are configured to set the operation settings like baud rate and usage of soft or hard reset.

The usage of the dip switches is explained as of below:

Dip Switch	Switch Number	Usage
ADDR (receiver only)	1	Address of Device
	2	
	3	
	4	
	5	Not Used
	6	
CFG1	1	Not Used
	2	
	3	Hard/Soft Reset Mode
	4	Baud Rate
	5	
	6	Disable/Enable Buzzer
CFG2	1	Spacing Selection
	2	Not Used
	3	
	4	
	5	
	6	

**Tab. 5.5:** Usage of dip switches

Usage of the dip switches will be explained in detail in the respective sections.



### Notice!

Take note that switch number 5 and 6 on dip switch ADDR, switch number 1 and 2 on dip switch CFG1 and switch number 2, 3, 4, 5 and 6 on dip switch CFG2 are currently not being used.



### Notice!

It is recommended to power off the coordinator/receiver before you change the dip switch settings. Upon completing the changes, power up the devices. The new settings will only take into effect once the coordinator/receiver completed a power reset cycle.

## 5.1 Setting the loop address

Use the address dip switch ADDR to configure the RS-485 loop address of the receiver. Each coordinator/receiver on a loop must have its own unique address. Only addresses 0 through 15 are valid.

The coordinator always uses address 0. You do not need to set the address for the coordinator. Therefore, the dip switch ADDR is not available on the coordinator.

The receivers use addresses 1 to 15. Configure the four switches from the left, 1, 2, 3 and 4 of dip switch ADDR as the address of the device.

Address	Switch Number on Dip Switch ADDR			
	1	2	3	4
0 (used for coordinator only)	OFF	OFF	OFF	OFF
1 (default setting for receiver)	ON	OFF	OFF	OFF
2	OFF	ON	OFF	OFF
3	ON	ON	OFF	OFF
4	OFF	OFF	ON	OFF
5	ON	OFF	ON	OFF
6	OFF	ON	ON	OFF
7	ON	ON	ON	OFF
8	OFF	OFF	OFF	ON
9	ON	OFF	OFF	ON
10	OFF	ON	OFF	ON
11	ON	ON	OFF	ON
12	OFF	OFF	ON	ON
13	ON	OFF	ON	ON
14	OFF	ON	ON	ON
15	ON	ON	ON	ON

**Tab. 5.6:** Address settings on dip switch ADDR

## 5.2 Selecting the hard/soft reset mode

There are two reset modes for the coordinator/receiver, namely the hard or soft reset. To select the reset mode, use dip switch CFG1. Set switch number 3 based on the following table.

Reset Mode	Switch Number on Dip Switch CFG1
	3
Soft reset (default setting)	OFF

Reset Mode	Switch Number on Dip Switch CFG1	
	3	
Hard reset	ON	

**Tab. 5.7:** Reset mode on dip switch CFG1

Pressing the Reset button on the coordinator/receiver performs the hard or soft reset accordingly. The differences of the reset mode are described in *Resetting the coordinator/receiver*, page 32.

### 5.3 Setting the baud rate

Configure the baud rate of the RS-485 communication by using the dip switch CFG1. The same baud rate must be set across the coordinator and the receivers in order for the RS-485 communication to work. Use the switch numbers 4 and 5 on dip switch CFG1 to set the baud rate. The options are described in the following table.

Baud Rate	Switch Number on Dip Switch CFG1	
	4	5
19200 (default setting)	OFF	OFF
38400	OFF	ON
57600	ON	OFF
115200	ON	ON

**Tab. 5.8:** Setting the baud rate on dip switch CFG1

### 5.4 Enable/disable the buzzer

Enable or disable the buzzer by setting the buzzer dip switch. Set switch number 6 on dip switch CFG1 to the OFF position to disable the buzzer. Once disabled, the buzzer will be muted at all times, including during alarm events. Set switch number 6 on dip switch CFG1 to the ON position to enable the buzzer to be operational. Once enabled, the buzzer will sound whenever triggered accordingly by the alarm events.

Enable/disable Buzzer	Switch Number on Dip Switch CFG1	
	6	
Disable Buzzer	OFF	
Enable Operational Buzzer (default setting)	ON	

**Tab. 5.9:** Enable or disable the buzzer on dip switch CFG1

### 5.5 Enable/disable the spacing mode

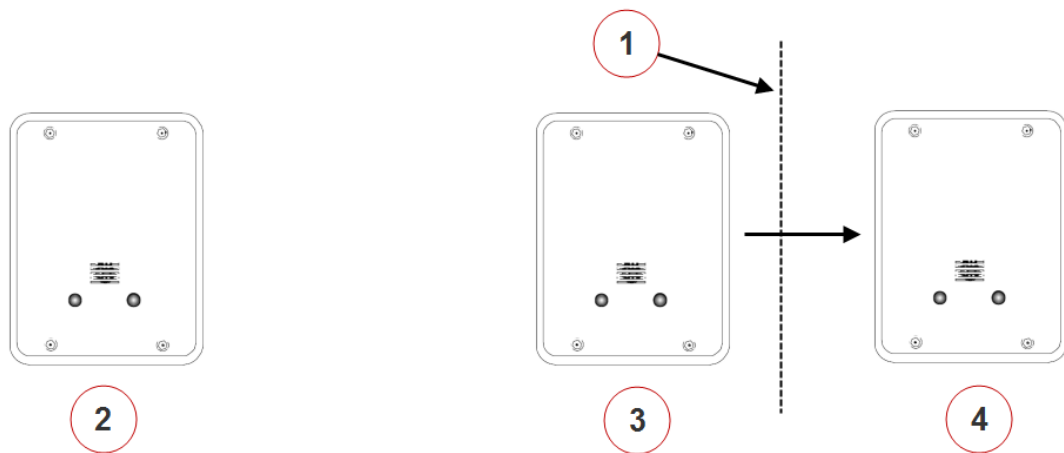
Spacing mode can be used to verify the maximum acceptable spacing of receivers. Enable or disable the spacing mode by setting switch number 1 on dip switch CFG2. Spacing mode is disabled by default, where switch number 1 is set to the OFF position. To enable the spacing mode, set switch number 1 on dip switch CFG2 to the ON position.

Enable/disable Spacing Mode	Switch Number on Dip Switch CFG2
	1
Disable Spacing Mode (default setting)	OFF
Enable Spacing Mode	ON

**Tab. 5.10:** Enable or disable the spacing mode on dip switch CFG2

To test the spacing of receivers:

1. Mount the first receiver (receiver 1). Set switch number 1 on dip switch CFG2 to the ON position. Power the receiver from a 24 VDC source.
2. Take the second receiver (receiver 2) and a transmitter a distance away from the first receiver.
3. Activate the transmitter.
4. If receiver 1 sounds the test beep, receiver 2 is within range. Repeat this test until receiver 1 no longer sounds the test beeps. Move back to the last location where receiver 1 received the test beeps. This location marks the maximum spacing between the receivers. The distance between the receivers should not exceed 25 m (80 ft.) indoors and 90 m (300 ft.) outdoors. Mount receiver 2 at this location or closer to receiver 1.



**Figure 5.1: Receiver Spacing**

1	Receiver 1 stops sounding the test beeps when receiver 2 is moved past this point	3	Receiver 2 at maximum range
2	Receiver 1	4	Receiver 2 beyond maximum range

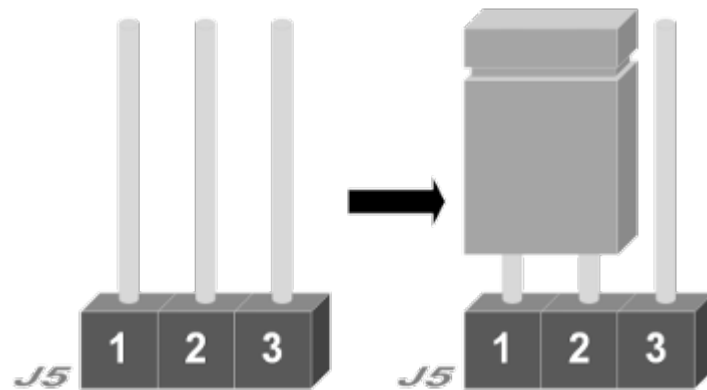
## 5.6

### Setting the jumpers for RS-485 communication loop

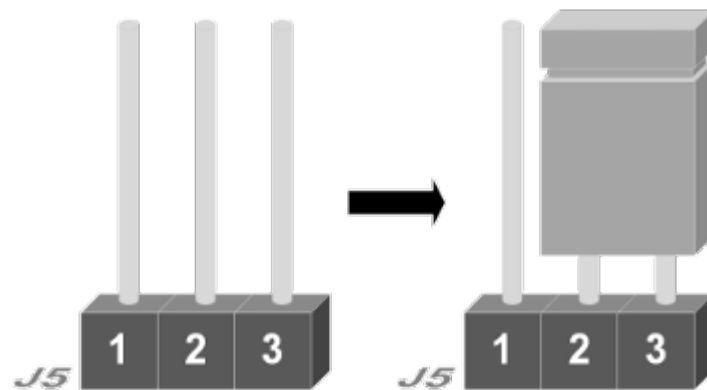
For RS-485 communication, it is necessary to include the end of line jumper settings on the last receiver to have a stable communication channel. Set the jumper for the coordinator and the receivers as of below:

1. Locate the jumper block J5 on the coordinator and the receivers. Starting with the pin nearest to the J5 label, the pins are identified as jumper pins 1, 2 and 3 consecutively from left to right.

- For the coordinator and the last receiver only, set the jumper over the jumper pins 1 and 2. This is the default factory setting on the coordinators/receivers.



- For all receivers except the last receiver, set the jumper over the jumper pins 2 and 3.



## 6 Troubleshooting the Device

This section offers troubleshooting guidance for situations when there are issues with the coordinator/receiver. Upon powering up the device, there are visual indicators that provide information about the current state or configuration of the devices. If these indicators behave differently from what is expected, there could be issues that need to be addressed. The following information can be helpful to determine potential issues.

Take note that the following LED indicators are only visible if the casing enclosure of the device is temporarily removed:

- Power supply LED
- Tricolor LED
- Ethernet LED
- Power over Ethernet (PoE) LED (on the coordinator only)

### 6.1 Checking the power supply

When you power up the coordinator/receiver using the external DC input, the power supply LED on the device will light up in orange. The LED will continue to illuminate as long as power is supplied to the device. If the LED is not illuminated, there could be issues with the power supply. Check that the operating input voltage is between the range specified (see *Power supply connector*, page 23). If there is no power, check the cable or power supply to ensure that it is not faulty. If there are no faults with the cable or power supply, check the coordinator/receiver.

### 6.2 Checking Power over Ethernet (PoE)

Power over Ethernet (PoE) is only applicable for coordinators. Power for the coordinator can be supplied via the Cat5e cable using the PoE technology. When powered by the PoE, the PoE LED will light up continuously in red color. If the LED is not illuminated, check that the Cat5e cable or the power sourcing equipment (for example, the network switch supplying the PoE) is not faulty.

### 6.3 Checking the RS-485 communication

The coordinator and receivers communicate with each other via RS-485. The tricolor LED on the device will blink in pink light every 3 seconds as long as RS-485 communication is available. To troubleshoot RS-485 communication, check that the following is working:

1. RS-485 is enabled on the host system configuration.
2. Wiring of RS-485 is not faulty.
3. Baud rate settings (configured via dip switch) on the coordinator/receivers are the same.

### 6.4 Resetting the coordinator/receiver

Incorrect configurations on the coordinator or receiver may sometimes be the cause of issues that you encounter. In instances like these, the issue may be cleared by simply performing a reset on the coordinator/receiver.

Depending on hard or soft reset, the reset cycle clears specific sets of configuration to the factory settings. Pressing the reset button initiates the reset cycle of the coordinator/receiver, with the red and green LEDs blinking once simultaneously to indicate a hard reset, and the red and green LEDs blinking twice simultaneously for a soft reset.

The device is then powered up automatically with the factory settings. For a list of settings or features that are being reset, please refer to the Appendix *Differences between hard and soft reset mode on the coordinator/receiver*, page 34.

---

## 6.5 Upgrading coordinator/receiver firmware

Use the Utility Tool of the Security Escort software to check/upgrade the coordinator/receiver firmware. For more information on the usage of Utility Tool, please refer to the *Security Escort Technical Reference Manual*.

## 6.6 Checking address conflicts

Device address 0 is reserved for coordinator only. However, as the address is configurable using ADDR dip switch on the receiver, it may be accidentally set to 0 as well. In this case, an address conflict occurs. This will render the receiver unusable, and lights up both the green and red LED of the receiver.

Similarly, if the addresses of two receivers are accidentally set as the same, their green and red LEDs will light up if they are connected to the same coordinator. This will render the receivers unusable.

If this is detected, change the receiver address by configuring the ADDR dip switch setting. See *Setting the loop address, page 28* for more information.



### Notice!

It is recommended to power off the coordinator/receiver before you change the dip switch settings. Upon completing the changes, power up the devices. The new settings will only take into effect once the coordinator/receiver completed a power reset cycle.

---

## 7 Appendices

### 7.1 Differences between hard and soft reset mode on the coordinator/receiver

The table below lists the different configurations that were cleared when performing the hard or soft resets.

Reset on device	Settings/Features	Hard Reset	Soft Reset
Coordinator	Name of device	✓	
	IP	✓	
	Subnet mask	✓	
	Gateway	✓	
	RF enable/disable	✓	✓
	RS485 enable/disable	✓	✓
	Internal tamper enable/disable	✓	✓
	Fail siren enable/disable	✓	✓
	Verbose enable/disable	✓	✓
	Test/Engineering settings	✓	✓
	Receiver table	✓	✓
Receiver	Host coordinator	✓	✓

**Tab. 7.11:** Differences between hard and soft reset





**Bosch Security Systems B.V.**

Torenallee 49  
5617 BA Eindhoven  
Netherlands

**[www.boschsecurity.com](http://www.boschsecurity.com)**

© Bosch Security Systems B.V., 2019